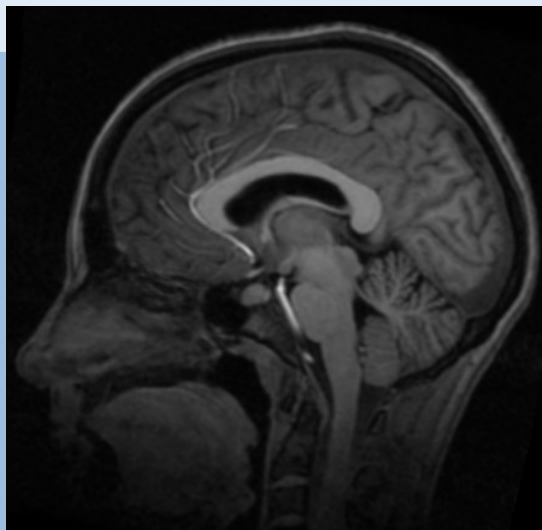
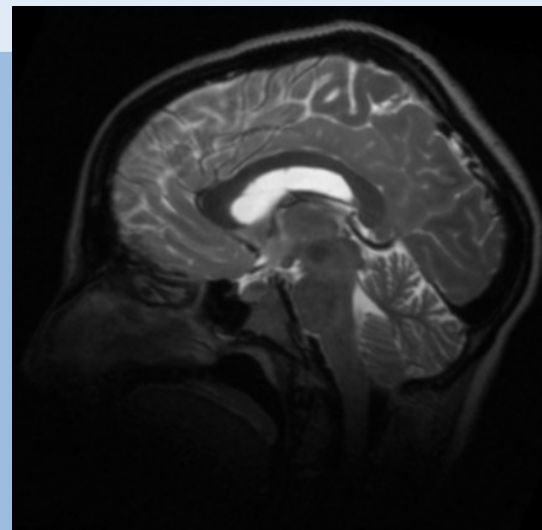


Point-wised Mutual Information for multi-modality diffeomorphic registration

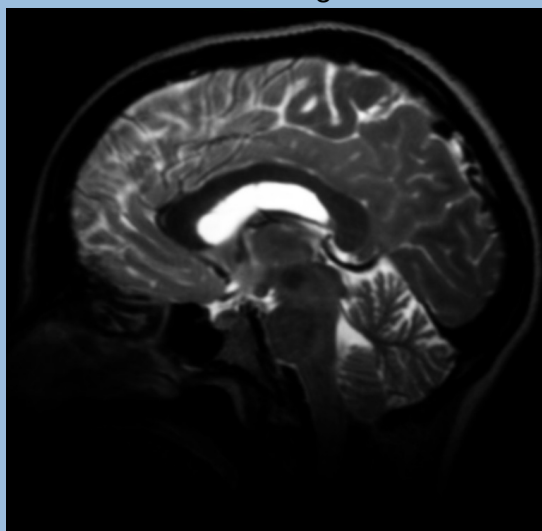
Result on 2D Slice



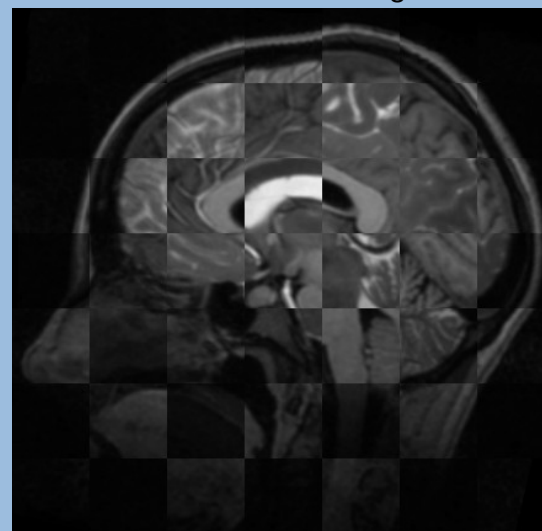
T1 image



T2 distorted image

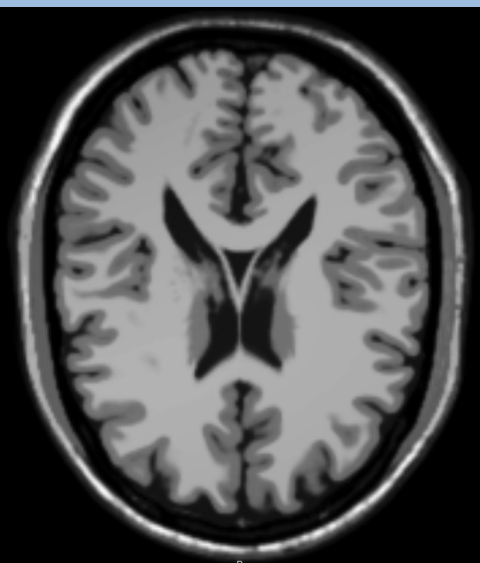


Registered image

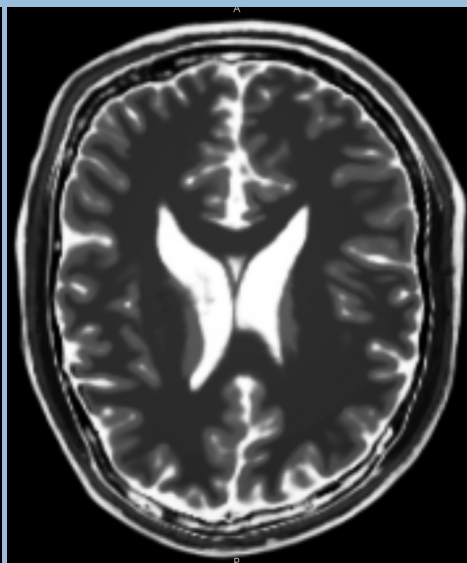


Checkerboard
after registration

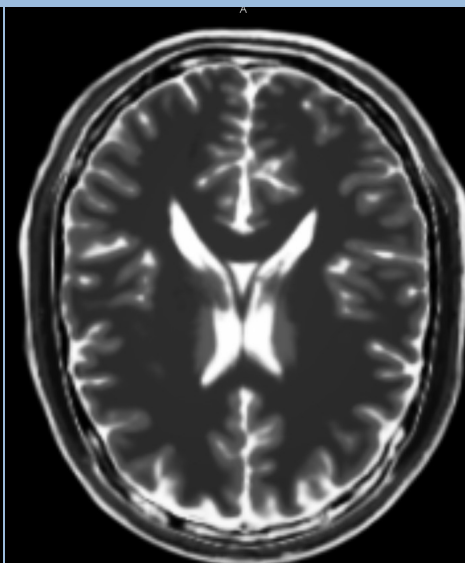
Result on 3D Volume



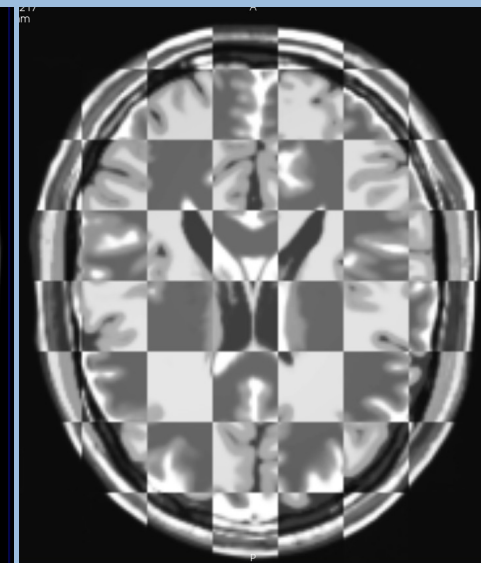
T1 image



T2 distorted image



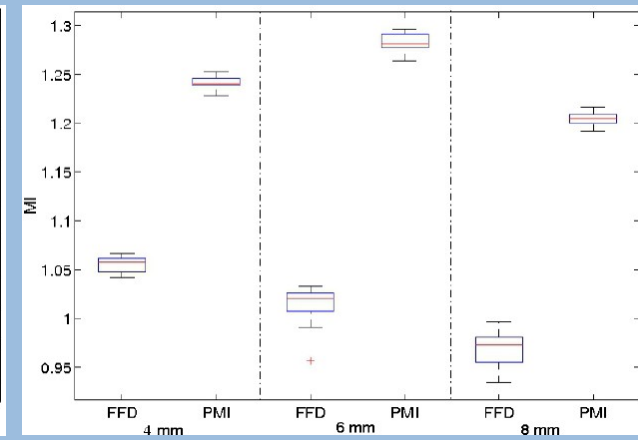
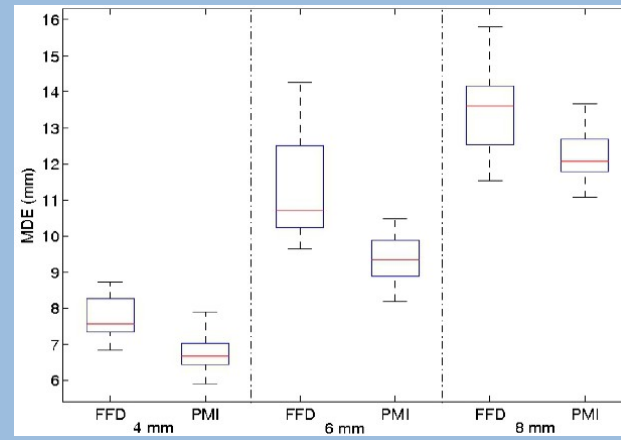
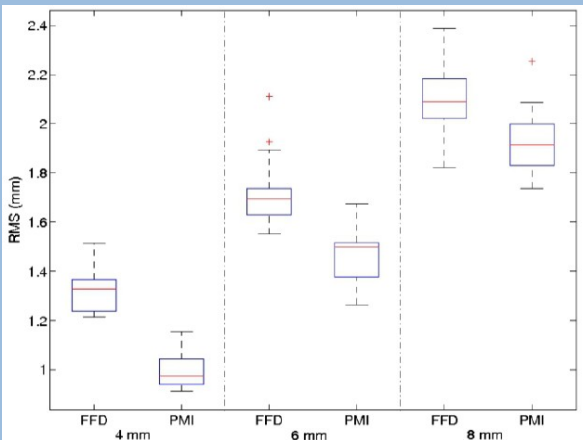
Registered image



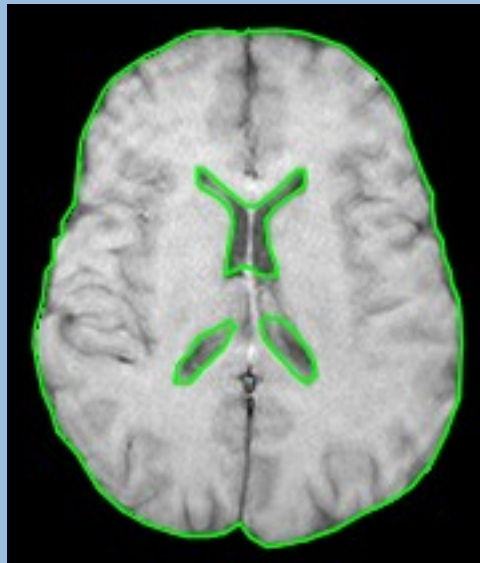
Checkerboard
after registration

Comparison with FFD

- Validation on 60 Brainweb cases with synthetic deformation of 4 mm, 6 mm and 8 mm
- Metric: root mean square (RMS), maximum distance error (MDE), mutual information (MI)



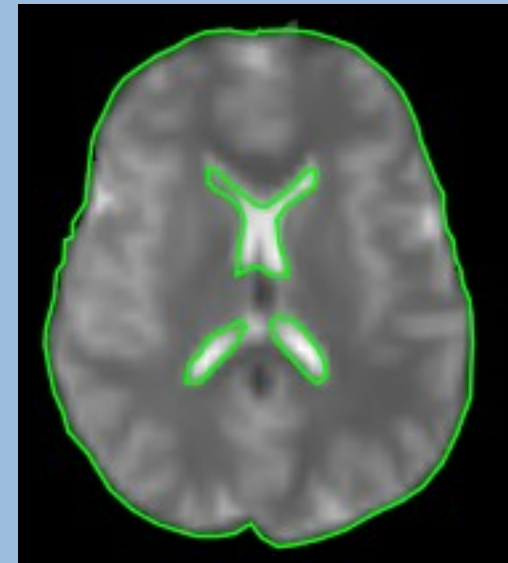
Result on EPI Distortion Correction



(a)



(b)



(c)

- > Contour of the brain and ventricle of (a) anatomical T1 image overlaid on (b) distorted EPI image and (c) corrected EPI image